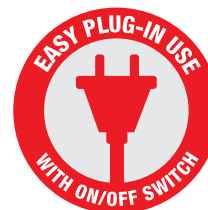


# LED Shop Light

## SPECIFICATIONS

### Ideal For

Hanging or Flush Mount Installation

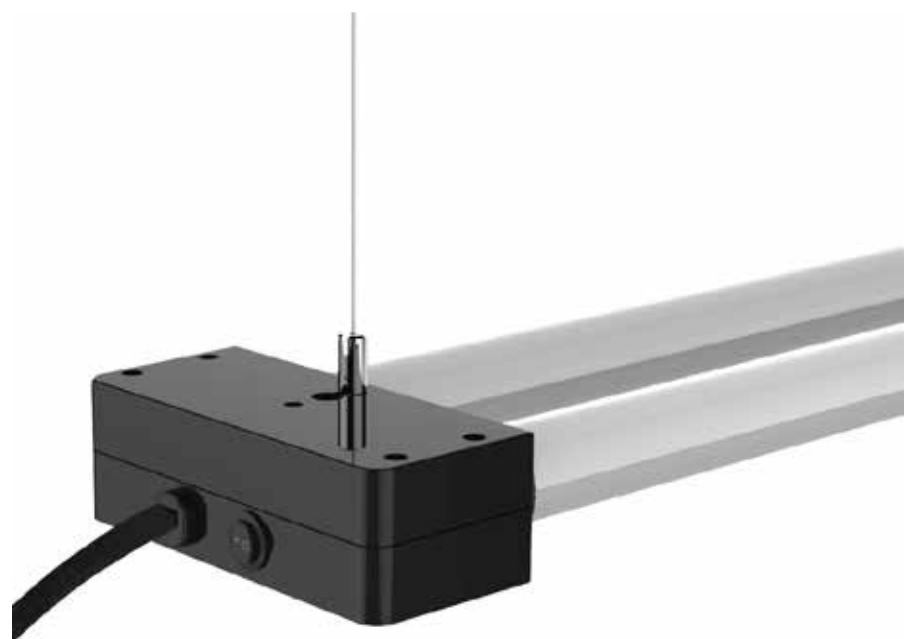


### Features

- Instant Full Brightness
- Ultra Light Weight Design
- Durable Smooth Edge Housing
- For Hanging or Flush Mount Installation
- FCC Compliant
- 100% Mercury Free
- Cool White
- UL/CUL Listed

### Benefits

- No Humming
- No Lamps to Dispose or Replace
- Lasts up to 45 Years
- Durable Smooth Edge Housing



Includes 6 Inch Hanging Wire Harness

### Specifications

Item Number	Input Power (Watts)	Input Line Voltage	CCT
73987	19	120	4000K
Lumens	Lumen Efficiency (LPW)	MOL	Diameter
1600	84	24"	4.9"
Life Hours	CRI		
50,000	≥80		