

LED UTILITY LAMP

SPECIFICATIONS

Ideal For

Ceiling Fixture

Warm White
3000K

Features

- Motion Sensor
- Instant On To Full Brightness
- Indoor/Suitable for Damp Locations
- Non-Dimmable
- ETL Listed
- FCC Compliant
- RoHS Compliant
- 100% Mercury Free
- 3 Year Warranty
- Warm White
- White Finish with a Plastic Lens
- Energy Star®

MOTION SENSOR

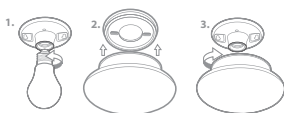


Benefits

- Easy Installation
- No Lamps Required
- Durable
- Long Life

INSTALLATION OPTIONS

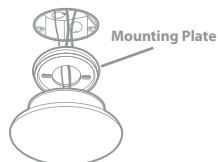
Option A:



1. Unscrew existing light bulb from socket
2. Remove screw shell cap from fixture
3. Screw in LED Fixture into socket

Option B:

1. Mount mounting bracket to junction box
2. Make wire connections between terminal block on fixture and wires from junction box
3. Twist and lock LED fixture onto mounting bracket
(Caution: Follow all instructions in installation manual)



Specifications

Item Number	Input Power (Watts)	Input Line Voltage	CCT
73817	11.5	120	3000K
Life Hours	Lumens	Lumen Efficiency (LPW)	Diameter
50,000	850	73	7.5"