

LED LAMP

SPECIFICATIONS

Ideal For

5 & 6 Inch Retrofit Trim

Daylight
5000K

Features

- High Output Bright LEDs
- 25,000 Hour Life
- RoHS Compliant
- 5 Year Warranty
- Suitable For Wet Locations
- UL/CUL Listed
- Energy Star®

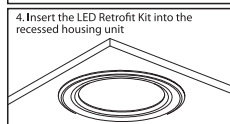
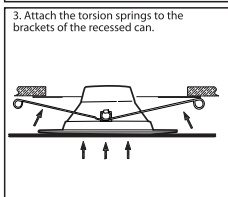
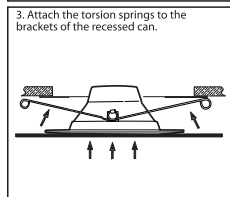
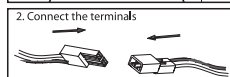
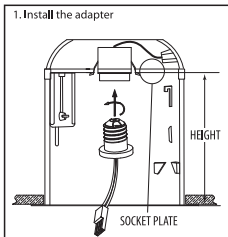
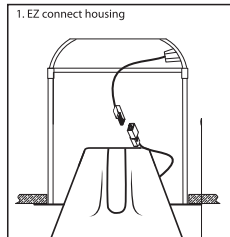
Housing Compatibility

- Suitable for type IC, type Non-IC and Air Tight Housings



EASY INSTALLATION 1 (WITH EZ CONNECT HOUSING)

EASY INSTALLATION 2 (WITH STANDARD SOCKET HOUSING)



Specifications

Item Number	Input Power (Watts)	Incandescent Equiv. (Watts)	Input Line Voltage
LEDR56/850/25K/4	13.3	75	120
Base Type	Lumens	Lumen Efficiency (LPW)	CCT
E26 Adapter	800	60	5000K
CRI	Housing	Life Hours	
>80	Fits 5" and 6" housings	25,000	